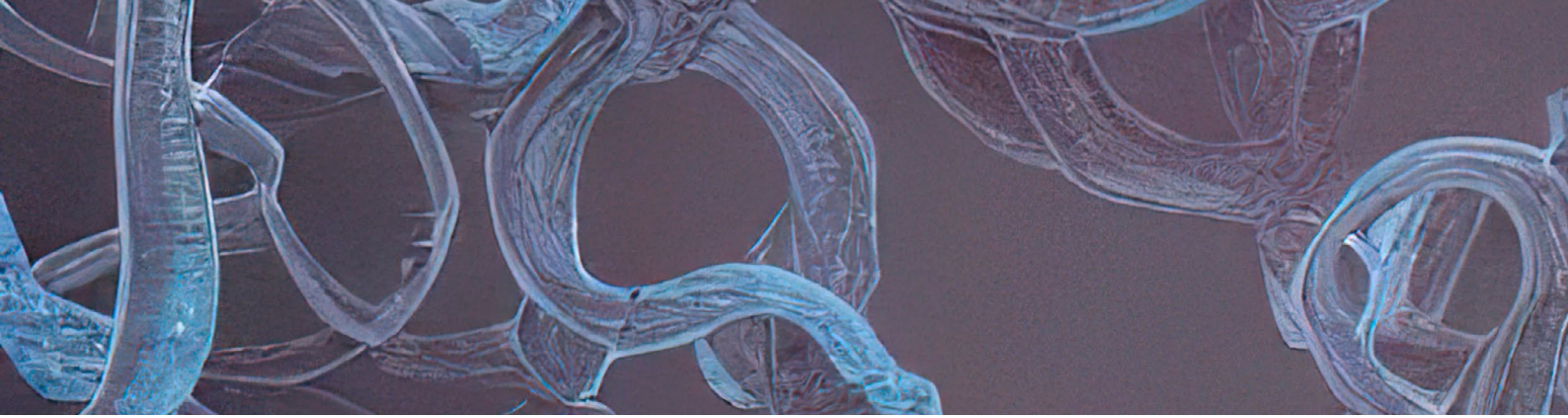


Your Partners in Cancer Research



Fighting cancer is more than just research. To many, it's a passion and a calling to make the world a better place, and, for far too many, it's personal.

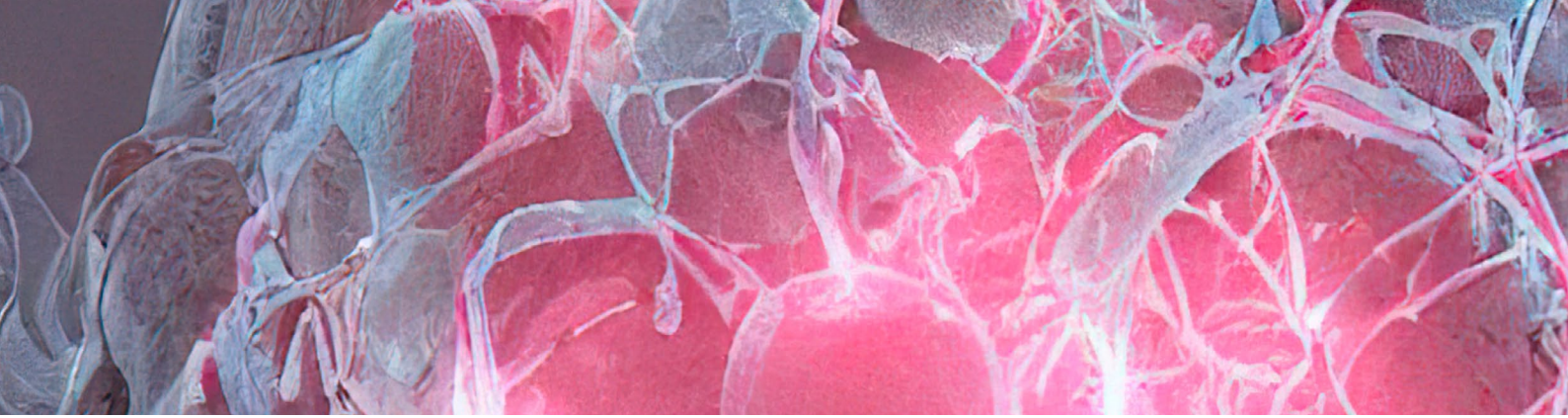
The struggle against this devastating disease takes place at the cutting edge of science and research, and every factor is vital when there are people's futures depending on your success.

When every sample and every result matters, there is simply no room for waste or error. The tools and technology available to you, as well as the resources, cannot be allowed to hold you back. Instead, they need to serve and empower you, and optimize your research.

Because the cause is vital, the stakes high, and the challenges many, we must partner together in this ongoing battle.

At the Fisher Scientific channel, we offer not only a wide range of cutting edge specialized products to enable you and your research, but also access to the teams of experts that will stand side-by-side with you and lend their knowledge and guidance on how to use these tools to their fullest potential.

We are here to serve science, especially where it counts the most.



Contents

Isolate	4 - 5
Quantify	6 - 7
Synthesize cDNA	8
Amplify	9
Separate and Capture	10 - 11
Express	2 - 15
Analyze	15 - 17
2D and 3D Analysis	18 - 24



Isolate

Thermo Scientific™ KingFisher™ Flex Purification System



Prepare samples efficiently from a variety of materials with Thermo Scientific™ KingFisher™ Flex Purification Systems.

- Fully automated system yields high-speed purification of nucleic acids, proteins and cells
- High throughput system processes up to 96 samples in less than 20 minutes
- Expands sample volume by 10-fold with the 24-well format
- Open and flexible system lets the customer use any magnetic particle-based kit to meet the application demands

Cat. No.	Description	Pack Qty
12511788	KingFisher Flex 96 PCR head	1
12501758	KingFisher Flex 96 PCR head and heating block	1
11734978	KingFisher Flex 96 Deep Well head and deep well and KF heating blocks	1
12579317	KingFisher Flex 96 KF head	1
12569317	KingFisher Flex 96 KF head and heating block	1
12508117	KingFisher Flex 96 PCR heating block	1
11839520	KingFisher 96 plate	1

Thermo Scientific™ KingFisher Apex Benchtop Sample Prep



KingFisher Apex is the most user-friendly and versatile benchtop sample prep instrument in the lab for 24 and 96 samples per run. Consistent high-throughput extraction of DNA, RNA, proteins and cells with extensive selection of validated application protocols.

- User-friendly high throughput sample purification system for automating DNA/RNA, protein and cell purification
- Provides versatile and high-speed purification with reproducible results
- Easy to use interface with touch screen empowering the user to control all details of the application and purification process
- BindX PC Software for added convenience

Cat. No.	Description	Pack Qty
16592442	KingFisher Apex with 96 PCR head	1
16502452	KingFisher Apex with 96 Combi head	1
16512452	KingFisher Apex with 96 DW head	1
16522452	KingFisher Apex with 24 Combi head	1

Invitrogen™ RNaseZap™ RNase Decontamination Solution



A surface decontaminant that destroys RNases on contact.

- A surface decontamination solution that destroys RNases on contact
- Simply spray RNaseZap™ Solution onto the surface to be decontaminated and rinse it off with RNase-free water
- Completely removes RNase contamination from glass and plastic surfaces

Cat. No.	Pack Qty
10708345	250mL
12122000	6 x 250mL
10186804	4 L

Help & Support Center

Visit and Bookmark our [New Help & Support Center](#)

We've launched our new Help & Support Center to help you maximise our website capabilities. Look for the Help & Support Center link in both the header and footer of the site, under Customer Support.

Check your order status, look up quotes, view your invoices and more!

Find out more on: eu.fishersci.com

Absolute Q Liquid Biopsy Digital PCR Assays

Rare-target quantification using digital PCR

Applied Biosystems™ Absolute Q™ Liquid Biopsy Digital PCR Assays are a precise, fast, and simple solution for the detection and quantification of common cancer-related mutations.



Learn more at thermofisher.com/dpcr-liquidbiopsy

applied biosystems

Quantify

Invitrogen™ Qubit™ 4 Starter Packages, with WiFi



Achieve accurate and reliable results with Qubit 4 Starter Packages, which combine the Qubit 4 Fluorometer with different assay kits for the quantification of nucleic acids or proteins. Qubit reagents bind selectively to DNA, RNA, or protein and only emit a fluorescent signal when bound to the target. This minimizes the effects of contaminants on the results and ensures accurate readings for sensitive samples.

Cat. No.	Description	Pack Qty
16284211	Qubit 4 Quantitation Starter Kit, with WiFi	1
16274351	Qubit 4 NGS Starter Kit, with WiFi	1
16294211	Qubit 4 RNA IQ Starter Kit, with WiFi	1
17671546	Qubit 4 Protein Broad Range Starter Kit	1

Implen NanoPhotometer™ NP80 Nano-Volume and Cuvette UV-VIS Spectrophotometer



The Implen NanoPhotometer™ NP80 UV-Vis Spectrophotometer for Nano-Volume and cuvette applications. Quantify DNA, RNA, proteins and scan other samples within seconds.

Automatic detection of contaminated samples ensure accurate results. Intuitive touchscreen operation, integrated vortex, simple pipette - measure - wipe - repeat workflow, small footprint and network integration for convenient lab bench operation. Recalibration-free patented technology, Made in Germany.

- Detection range dsDNA 1 ng/μL - 16,500 ng/μL
- Detection range BSA 0.03 mg/mL - 478 mg/mL
- Minimum sample size 0.3 μL
- Scan range 200 - 900 nm

Cat. No.	Pack Qty
15485824	1

Implen NanoPhotometer™ N60 Micro-Volume UV-VIS Spectrophotometer



The Implen NanoPhotometer™ N60 UV-Vis Spectrophotometer for Micro-Volume applications. Quantify DNA, RNA, proteins and scan other samples within seconds.

Automatic detection of contaminated samples ensure accurate results. Intuitive touchscreen operation, integrated vortex, simple pipette - measure - wipe - repeat workflow, small footprint and network integration for convenient lab bench operation. Recalibration-free patented technology, Made in Germany.

- Detection range dsDNA 1 ng/μL - 16,500 ng/μL
- Detection range BSA 0.03 mg/mL - 478 mg/mL
- Minimum sample size 0.3 μL
- Scan range 200 - 900 nm

Cat. No.	Pack Qty
15442203	1

Implen NanoPhotometer™ N120 Multichannel Micro-Volume UV-VIS Spectrophotometer



The Implen NanoPhotometer™ N120 scans up to 12 samples in just 20 seconds. Quantifying DNA, RNA and proteins has never been faster. Increase your sample throughput and measure a 96 well plate in just 5 min. Less pipetting means less possible errors.

Automatic detection of contaminated samples ensure accurate results. Intuitive touchscreen operation, simple pipette - measure - wipe - repeat workflow, small footprint and network integration for convenient lab bench operation. Recalibration-free patented technology, Made in Germany.

- Sample number 1 - 12
- Detection range dsDNA 2 ng/μL - 8,000 ng/μL
- Detection range BSA 0.06 mg/mL - 230 mg/mL
- Minimum sample size 2.0 μL
- Scan range 200 - 900 nm

Cat. No.	Pack Qty
16309021	1

Gibco cell culture at 60

Celebrating 60 years of defining moments in cell culture—from the first commercial supply of cell culture sera to Gibco CTS products for the first approved CAR T cell therapies

Join the celebration at
thermofisher.com/gibco60th



1962–1986



1987–1996



1996–2007



2008–present



Years of
loving your
cells

Synthesize cDNA

Invitrogen™ Nuclease-Free Water (not DEPC-Treated)

Nuclease-free water (not DEPC-treated) has been deionized, filtered into the final bottle, and autoclaved.



- Ready to use and requires no preparation, mixing, or autoclaving
- Rigorously tested for contaminating non-specific endonuclease, exonuclease, and RNase activity
- Since this water is not DEPC-treated, it is recommended for applications in which residual DEPC might prove detrimental (e.g., oocyte microinjection)

Cat. No.	Pack Qty
10793837	4 x 1000mL
10429224	1 x 500mL
10320995	1 x 1000mL
10526945	10 x 50mL
10185104	1 x 100mL
10457884	5 x 100mL

Invitrogen™ RNAlater™ Stabilization Solution

Immediate RNase inactivation and RNA stabilization within tissues or cells.

- Effectiveness: Stabilize RNA for 1 day at 37°C, 1 week at 25°C, 1 month at 4°C, or indefinitely at -20°C
- Simplicity: A single reagent that immediately inactivates RNases and stabilizes RNA within tissues or cells
- Convenience: No need to freeze samples in liquid nitrogen or rush samples back to the lab freezer
- Mobility: Perfect for tissue collection in the field



Cat. No.	Pack Qty
10564445	100mL
10427114	500mL
10620036	50 x 1.5mL
10594445	20 x 5mL
10391085	1 x 250mL

Invitrogen™ SuperScript™ IV VILO™ Master Mix



SuperScript™ IV VILO™ Master Mix is a reaction master mix designed for fast, sensitive, and reproducible cDNA synthesis in RT-qPCR applications.

- Super-fast RT reaction in just 10 minutes and gDNA removal in 2 minutes
- Super-high yields—lower Ct values by more than 2 cycles ahead of all other reverse transcription reagents
- Super-convenient one-tube cDNA reaction master mix for two-step RT-qPCR

Cat. No.	Pack Qty
15574395	50 reactions
15584395	500 reactions

Invitrogen™ SuperScript™ IV One-Step RT-PCR System



Enabling faster, better RT-PCR.

- Two-phase, hot-start activation mechanism for high specificity, yield, and room-temperature setup
- Superior performance with sensitivity down to 0.01pg of RNA, target length up to 13.8kb, and the fastest one-step RT-PCR protocol
- Reliable target detection even with RNA samples of suboptimal purity

Cat. No.	Pack Qty
15781999	50 reactions

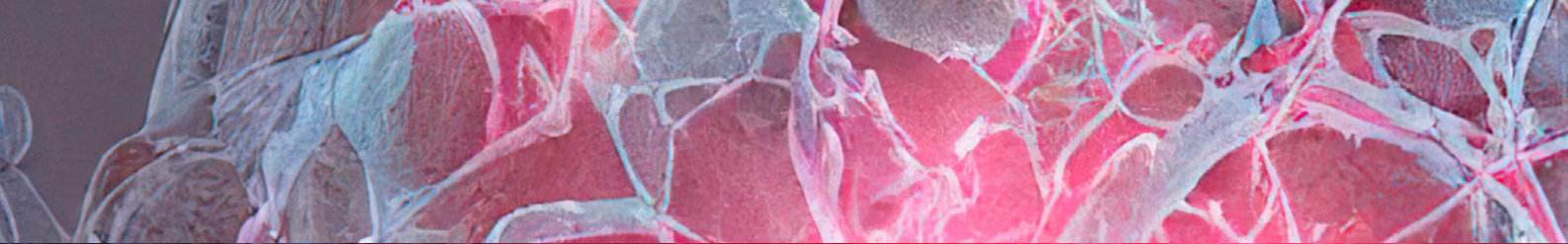
Invitrogen™ SuperScript™ IV One-Step RT-PCR System with ezDNase™



Enabling faster, better RT-PCR.

- Two-phase, hot-start activation mechanism for high specificity, yield, and room-temperature setup
- Superior performance with sensitivity down to 0.01pg of RNA, target length up to 13.8kb, and the fastest one-step RT-PCR protocol
- Reliable target detection even with RNA samples of suboptimal purity

Cat. No.	Pack Qty
15850233	25 reactions



Amplify

Applied Biosystems™ VeritiPro™ Thermal Cycler, 384 Well



The Applied Biosystems VeritiPro Thermal Cycler delivers proven reliability with advanced temperature control technology and connectivity.

Take advantage of next-level PCR technology featuring faster ramping speeds and lower noise output. Connect to the cloud-enabled VeritiPro Thermal Cycler remotely. Conveniently design and securely upload your methods, monitor runs, and check instrument availability from any mobile device or desktop computer using Connect, our cloud-based platform.

Cat. No.	Pack Qty
17251822	1

Applied Biosystems™ VeritiPro™ Thermal Cycler, 96 Well



The Applied Biosystems VeritiPro Thermal Cycler delivers proven reliability with advanced temperature control technology and connectivity. Take advantage of next-level PCR optimization with the precision offered by VeriFlex block technology.

Connect to the cloud-enabled VeritiPro Thermal Cycler remotely. Conveniently design and securely upload your methods, monitor runs, and check instrument availability from any mobile device or desktop computer using Connect, our cloud-based platform.

Cat. No.	Pack Qty
16893330	1

Applied Biosystems™ VeritiPro™ Thermal Cycler + Plastics Package, 384 Well, EnduraPlates



The Applied Biosystems VeritiPro Thermal Cycler delivers proven reliability with advanced temperature control technology and connectivity.

Take advantage of next-level PCR technology featuring faster ramping speeds and lower noise output. Connect to the cloud-enabled VeritiPro Thermal Cycler remotely. Conveniently design and securely upload your methods, monitor runs, and check instrument availability from any mobile device or desktop computer using Connect, our cloud-based platform.

Cat. No.	Pack Qty
17231822	1



Separate and Capture

Thermo Scientific™ E-Gel™ Power Snap Plus Electrophoresis Systems



E-Gel™ Power Snap Plus is an integrated high-throughput E-Gel™ Agarose Electrophoresis System that offers a fast, convenient, and streamlined nucleic acid electrophoresis analysis solution.

- Streamline electrophoresis and image capture with an all-in-one system
- Compatible with 11- to 96-well E-Gel agarose gels
- View and capture DNA samples in real-time
- Access your images anywhere using the built-in Thermo Fisher Connect platform and network compatibility

Cat. No.	Includes	Pack Qty
17732069	Electrophoresis device with integrated camera, WiFi dongle	1
17742069	Electrophoresis device with integrated camera, E-Gel 48 1% with SYBR Safe, WiFi dongle	1
17752069	Electrophoresis device with integrated camera, E-Gel 48 2% with SYBR Safe, WiFi dongle	1
17762069	Electrophoresis device with integrated camera, E-Gel 96 1% with SYBR Safe, WiFi dongle	1
17772069	Electrophoresis device with integrated camera, E-Gel 96 2% with SYBR Safe, WiFi dongle	1

Pall Acrodisc™ Syringe Filters with Supor™ Membrane, Sterile



Sterile Acrodisc syringe filters featuring Pall's Supor™ membrane for high throughput, fast filtration, and low protein binding. Available in 13mm, 25mm and 32mm sizes, with pore sizes ranging from 0.1µm to 5.0µm.

- Gamma-irradiated individual blister packs ensure sterility
- Ergonomic blister packs assure sterile storage, handling, and connections
- Superior membrane performance achieves high filtration flow and throughput
- Integrated dual-layer pre-filter for high dirt-holding capacity and increased throughput

Cat. No.	Pore Size	Diameter	Pack Qty
17154361	0.2µm	13mm	75
17194361	0.2µm	25mm	50

Pall Acrodisc™ PF Syringe Filters with Supor™ Membrane, Sterile



These syringe filters are ideal for biological and general research.

- Syringe filters perform sample clean-up and preparation, ensuring the purest samples are analyzed in liquid chromatography, mass spectrometry, and ion chromatography applications
- Superior flow rates and higher throughput than competitive devices
- This product is not approved for use in medical, clinical, surgical or other patient applications

Cat. No.	Pore Size	Diameter	Pack Qty
17134271	0.2µm	25mm	50
17174381	0.2µm	32mm	50

Pall DMSO-Safe Acrodisc™ Syringe Filters

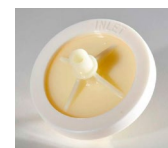


Polypropylene housing and nylon membrane are compatible with solutions containing DMSO.

- Chemical compatibility with esters, bases, and alcohols
- Not approved for use in medical, clinical, surgical or other patient applications

Cat. No.	Pack Qty
17124311	50

Pall Serum Acrodisc™ Syringe Filters with Supor™ Membrane



Syringe filters are ideal for biological and general research.

- Chemical compatibility with esters, bases, and alcohols
- Not approved for use in medical, clinical, surgical or other patient applications

Cat. No.	Pack Qty
17154341	20

One and Done your Protein Purification Workflows with the AcroPrep™ Cell Clarification and Sterile Filter plate

**ONE STEP PROCESS
HIGH RECOVERY
FIRST TO MARKET**

Pall Laboratory has a NEW 24-well, 7 mL, filter plate for use with protein purification/sterile workflows. This filter plate allows sterile 0.2 µm filtering of proteins from a cell culture solution in one step. Easily and quickly filter proteins from CHO, HEK or other cell cultures with densities as high as 25 million cells/mL or more. Streamline workflows, reduce processing time, improve recovery – all in One Step.



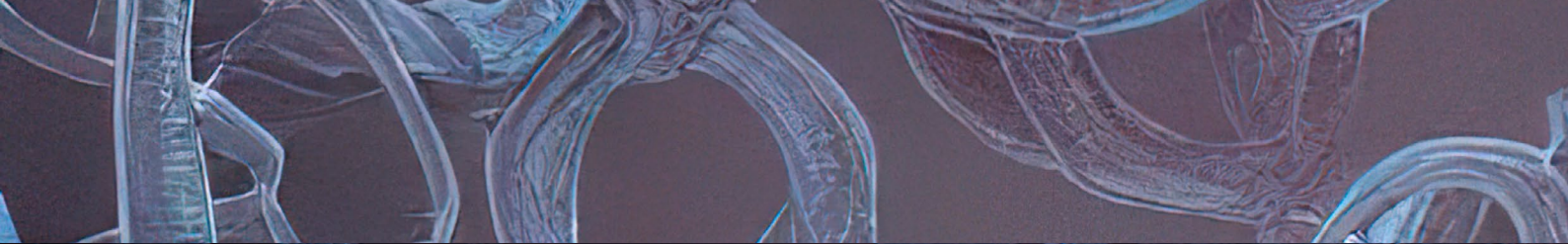
Cell culture containing cells and proteins

Transfer cell culture from cell plate to AcroPrep 24-well filter plate

Vacuum or centrifuge to sterile filter proteins from a cell culture in one step

Captured cells and debris

Sterilized proteins



Express

Thermo Scientific™ Pierce™ Protease Inhibitor Mini Tablets



Thermo Scientific Pierce Protease Inhibitor Mini Tablets are broad-spectrum protease inhibitors that are highly effective at preventing proteolytic degradation for cell lysis and protein extraction experiments.

- Improved formulation tablets dissolve quickly into a clear solution
- Economical – more cost-effective than other commercially available formulations for equivalent volumes
- Convenient - ready-to-use, fully disclosed, broad-spectrum formulations
- Compatible - use directly with Thermo Scientific Pierce BCA Assays

Cat. No.	Pack Qty
15614189	30 tablets

Thermo Scientific™ Pierce™ GPCR Extraction and Stabilization Reagent



Enables efficient extraction and stabilization of G-coupled protein receptors (GPCRs) and other membrane-associated proteins from cultured mammalian cells or tissue while preserving longer-term receptor integrity.

- Thermo Scientific GPCR Extraction and Stabilization Reagent enables efficient extraction and stabilization of G-coupled protein receptors (GPCRs) and other membrane-associated proteins from cultured mammalian cells or tissue while preserving longer-term receptor integrity.
- Ease-of-use— all-in-one formulation to extract and stabilize GPCRs in one hour
- GPCR preservation— stabilizes the receptor in a detergent micelle to ensure receptor function

Cat. No.	Pack Qty
16585651	30 tablets

Thermo Scientific™ Subcellular Protein Fractionation Kit for Cultured Cells



Enrich for cultured cell-specific cytoplasmic, membrane, nuclear soluble, chromatin-bound and cytoskeletal proteins in less than three hours.

- Concise – extract functional cytoplasmic, membrane, nuclear soluble, chromatin-bound and cytoskeletal protein fractions in less than three hours
- Convenient – perform a simple procedure without using ultracentrifugation over gradients
- Complete – obtain cytoplasmic, membrane, soluble nuclear, chromatin-bound and cytoskeletal protein fractions from a single kit
- Cultured Cells – developed and optimized for use with cultured mammalian cells; for tissue samples use the Subcellular Fractionation Kit for Tissues, Cat. No. 12351403

Cat. No.	Pack Qty
10455924	30 tablets

Thermo Scientific Pierce™ Rapid Gold BCA Protein Assay Kit



Thermo Scientific™ Pierce™ Rapid Gold BCA Protein Assay Kit is a two-component, high-precision, detergent-compatible assay optimized to measure (at 480nm) total protein concentration compared to protein standard curve of known concentrations.

- A fast, two-component, high-precision, detergent-compatible assay optimized to determine total protein concentration
- Can be used to assess yields in whole cell lysates and affinity-column fractions, as well as to monitor protein contamination in industrial applications
- Assay maintains the key characteristics of the traditional BCA assay but allows a fast time and room temperature incubation equal to dye-binding methods
- Provides comparable accuracy but with a 5 min., room temperature incubation and measured at 480nm

Cat. No.	Pack Qty
15776178	500mL

Invitrogen™ Neon™ Transfection System

For stem cells, primary cells, hard-to-transfect cells and established cell lines.

- Up to 90% in many cell types, including difficult-to-transfect cells, primary, and stem cells
- Easily transfect from 2×10^4 cells to 6×10^6 cells per reaction
- Easy to use, with a single reagent kit for all cell types
- Open system allows electroporation parameters to be optimized freely



Cat. No.	Pack Qty
10431915	1

Invitrogen™ Neon™ Transfection System Starter Pack

Animal origin-free, serum-free and compatible with transfection-grade nucleic acid purification kits, siRNA vectors and DNA vectors.

- Efficient: Up to 90% in many cell types, including difficult-to-transfect cells, primary, and stem cells
- Flexible: Easily transfect from 2×10^4 cells to 6×10^6 cells per reaction
- Simple: Easy to use, with a single reagent kit for all cell types
- Versatile: Open system allows electroporation parameters to be optimized freely



Cat. No.	Pack Qty
10090314	1

BTX™ ECM™ 630 Generator Only

The BTX ECM™ 630 Exponential Decay Wave Electroporator is ideal for efficient transformation of bacteria, yeast and other microorganisms.

- Wide and accurate voltage, capacitance, and internal resistance settings
- Preset protocols for common bacteria, yeast, and microorganism types
- Unlimited ability to add and modify user defined protocols
- Data logs of delivered pulses and sample resistance for QC and troubleshooting



Cat. No.	Pack Qty
15808451	1

BTX™ ECM™ 630 Electroporation System Complete, with Safety Stand



The BTX ECM™ 630 Exponential Decay Wave Electroporator is ideal for efficient transformation of bacteria, yeast and other microorganisms.

- Wide and accurate voltage, capacitance, and internal resistance settings
- Preset protocols for common bacteria, yeast, and microorganism types
- Unlimited ability to add and modify user defined protocols
- Data logs of delivered pulses and sample resistance for QC and troubleshooting

Cat. No.	Pack Qty
15898441	1

BTX™ ECM™ 630 Electroporation System Complete, for Cuvettes with Monitoring

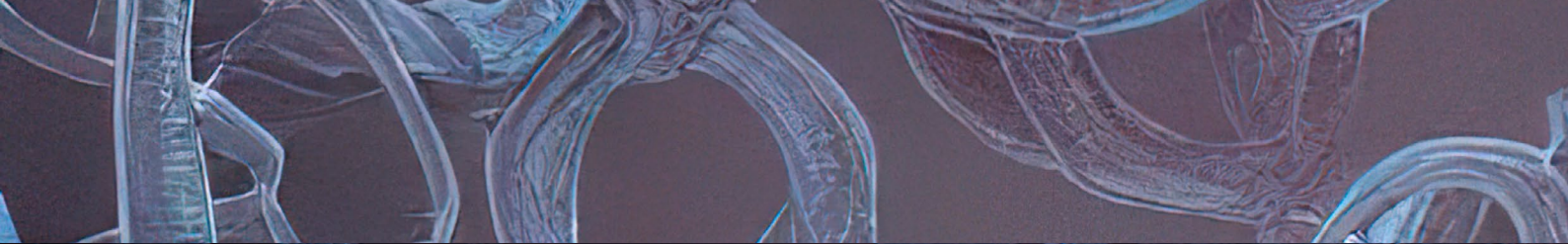


The BTX ECM™ 630 Exponential Decay Wave Electroporator is ideal for efficient transformation of bacteria, yeast and other microorganisms.

- Wide and accurate voltage, capacitance, and internal resistance settings
- Preset protocols for common bacteria, yeast, and microorganism types
- Unlimited ability to add and modify user defined protocols
- Data logs of delivered pulses and sample resistance for QC and troubleshooting

Cat. No.	Pack Qty
15838451	1





BTX™ ECM™ 630 Electroporation System Complete, with Safety Dome



The BTX ECM™ 630 Exponential Decay Wave Electroporator is ideal for efficient transformation of bacteria, yeast and other microorganisms.

- Wide and accurate voltage, capacitance, and internal resistance settings
- Preset protocols for common bacteria, yeast, and microorganism types
- Unlimited ability to add and modify user defined protocols
- Data logs of delivered pulses and sample resistance for QC and troubleshooting

Cat. No.	Pack Qty
15848471	1

BTX™ ECM™ 630 High Throughput Electroporation System with Monitoring



The BTX ECM™ 630 Exponential Decay Wave Electroporator is ideal for efficient transformation of bacteria, yeast and other microorganisms.

- Wide and accurate voltage, capacitance, and internal resistance settings
- Preset protocols for common bacteria, yeast, and microorganism types
- Unlimited ability to add and modify user defined protocols
- Data logs of delivered pulses and sample resistance for QC and troubleshooting

Cat. No.	Pack Qty
15848451	1

BTX™ ECM™ 630 High Throughput Electroporation System, 96-Well with HT-100



The BTX ECM™ 630 Exponential Decay Wave Electroporator is ideal for efficient transformation of bacteria, yeast and other microorganisms.

- Wide and accurate voltage, capacitance, and internal resistance settings
- Preset protocols for common bacteria, yeast, and microorganism types
- Unlimited ability to add and modify user defined protocols
- Data logs of delivered pulses and sample resistance for QC and troubleshooting

Cat. No.	Pack Qty
15828451	1

BTX™ ECM™ 830 Generator Only



The BTX ECM™ 830 Square Wave Electroporator is ideal for transfection of mammalian cells and tissues.

- Wide and accurate voltage, pulse length, and pulse interval settings
- Preset protocols for common mammalian cell and tissue types
- Unlimited ability to add and modify user defined protocols
- Data logs of delivered pulses and sample resistance for QC and troubleshooting

Cat. No.	Pack Qty
15868451	1

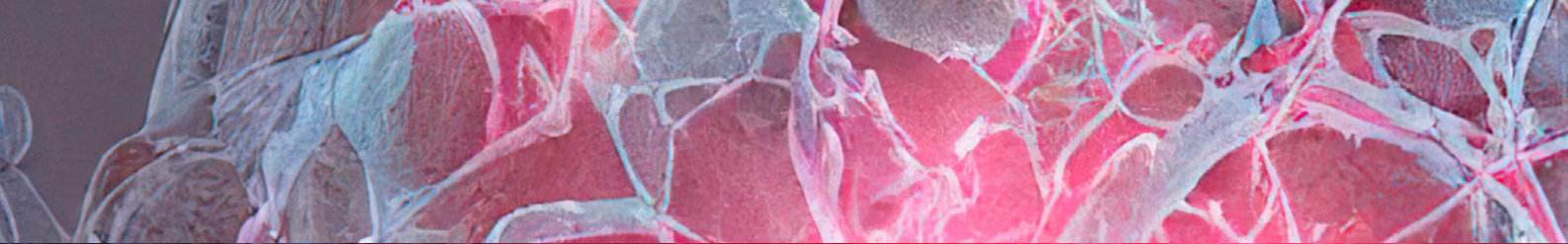
BTX™ ECM™ 830 High Throughput Electroporation System, 96-Well with HT-200



The BTX ECM™ 830 Square Wave Electroporator is ideal for transfection of mammalian cells and tissues.

- Wide and accurate voltage, pulse length, and pulse interval settings
- Preset protocols for common mammalian cell and tissue types
- Unlimited ability to add and modify user defined protocols
- Data logs of delivered pulses and sample resistance for QC and troubleshooting

Cat. No.	Pack Qty
15808461	1



BTX™ ECM™ 830 Electroporation System, with Safety Stand



The BTX ECM™ 830 Square Wave Electroporator is ideal for transfection of mammalian cells and tissues.

- Wide and accurate voltage, pulse length, and pulse interval settings
- Preset protocols for common mammalian cell and tissue types
- Unlimited ability to add and modify user defined protocols
- Data logs of delivered pulses and sample resistance for QC and troubleshooting

Cat. No.	Pack Qty
15858451	1

BTX™ ECM™ 830 Electroporation System Complete, for Cuvettes with Monitoring



The BTX ECM™ 830 Square Wave Electroporator is ideal for transfection of mammalian cells and tissues.

- Wide and accurate voltage, pulse length, and pulse interval settings
- Preset protocols for common mammalian cell and tissue types
- Unlimited ability to add and modify user defined protocols
- Data logs of delivered pulses and sample resistance for QC and troubleshooting

Cat. No.	Pack Qty
15818461	1

BTX™ ECM™ 830 Electroporation System, with Safety Dome



The BTX ECM™ 830 Square Wave Electroporator is ideal for transfection of mammalian cells and tissues.

- Wide and accurate voltage, pulse length, and pulse interval settings
- Preset protocols for common mammalian cell and tissue types
- Unlimited ability to add and modify user defined protocols
- Data logs of delivered pulses and sample resistance for QC and troubleshooting

Cat. No.	Pack Qty
15858471	1

BTX™ ECM™ 830 High Throughput Electroporation System, 96-Well with HT-100



The BTX ECM™ 830 Square Wave Electroporator is ideal for transfection of mammalian cells and tissues.

- Wide and accurate voltage, pulse length, and pulse interval settings
- Preset protocols for common mammalian cell and tissue types
- Unlimited ability to add and modify user defined protocols
- Data logs of delivered pulses and sample resistance for QC and troubleshooting

Cat. No.	Pack Qty
15898451	1

Analyze

Syngene™ GBOX- CHEMI-XX6-F080 Gel Documentation System



The GBOX Chemi-XX6 is a versatile gel documentation system for blots and gels.

- Environmental benefits include:
 - non-toxic
 - ozone-safe or safe for the ozone Layer

Cat. No.	Pack Qty
16317545	1



Looking for accurate Western Blot and gel data?

The G:BOX XX6 imaging system truly allows you to capture real results.

With over 37 years of experience, our products are used globally by thousands of molecular biologists and scientists, who are successfully contributing accurate data to important projects in many of the world's top academic research institutes and pharmaceutical companies.



FEATURES



SENSITIVE

High performance imaging with comparable sensitivity to film, a low noise-level and a wide dynamic range enable enhanced detection of faint and intense bands on the same blot.



FUTURE-PROOF

With the guarantee of free software upgrades throughout the system's life, the G:BOX XX6 will always be up to date with the latest imaging features. You can also upgrade the lights and filters.



FAST CHEMILUMINESCENCE DETECTION

Walk-away image capture without film



INTUITIVE SOFTWARE

Contains extensive database of dyes and imaging protocols. All you need to know is the type of gel you're using and GeneSys automatically selects the optimal lighting and filters to produce the perfect image. (unlimited copies).



EXTENDED DARKROOM WITH MOTOR DRIVEN STAGE

Easily image large gels and blots

APPLICATIONS



Chemiluminescence



Fluorescence (including multiplex)



DNA Gels



Protein Gels



GFP-plant imaging



Stain free gels



2D gels (DIGE)



Films



Infra Red Imaging

And many more.

COMPLIANCE

CFR
Part 11

ISO
9001:2008

3 Year
Warranty



WESTERN DETECTION

Stunningly easy western blot and gel imaging

2023 looks brighter than ever with iBright Imaging Systems

Get high-quality images fast—automatic zoom, focus, sample rotation*, and Smart Exposure™ auto-exposure technology streamline the workflow for capturing images

Capture more data per blot and image—multiplex with up to four fluorophores and image up to four mini blots or mini gels at a time

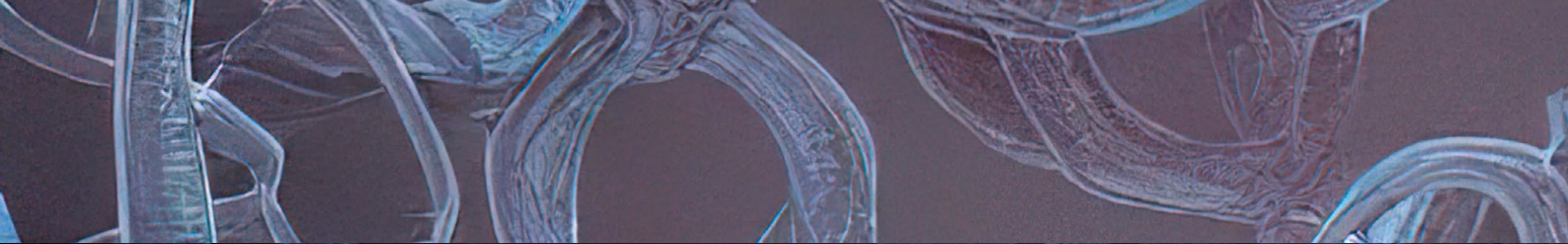
Maximize your investment—enhance the value of your system with colony-counting analysis and 96-well Invitrogen™ E-Gel™ Precast Agarose Gel deconvolution

See the other side to find out how Invitrogen™ iBright™ Imaging Systems can empower you

* Automatic rotation available only on the Invitrogen™ iBright™ FL1500 and CL1500 systems.



invitrogen



2D and 3D Cell Analysis

Corning™ Elplasia™ Microcavity Plates

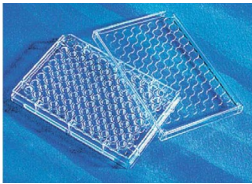


The only plates with a simple 'plug and play' protocol for scaffold-free, self-assembly spheroid formation at large volumes.

- Corning Elplasia™ 6-well Black/Clear Round Bottom Ultra-Low Attachment microcavity 6 well plates have a novel well geometry and surface coatings, including Corning Ultra Low Attachment (ULA) featured on the round bottom plates.
- Corning ULA surface is hydrophilic, biologically inert and non-degradable, which promotes highly reproducible spheroid formation and easy harvesting.
- Corning Elplasia round bottom plates optimal for bulk spheroid formation, collection and expansion.
- Round bottom plates feature Corning Ultra-Low Attachment surface and are also available in 24- and 96-well formats.

Cat. No.	Pack Qty
16425289	5

Corning™ 96-Well Clear Ultra Low Attachment Microplates



Covalently bonded hydrogel minimizes cell attachment, protein absorption, enzyme activation and cellular activation. Corning™ 96-Well Clear Ultra Low Attachment Microplates allow for lentivirus transduction of human osteoclast precursor cells.

- Corning 96-well Clear Round Bottom Ultra-Low Attachment Microplates have Ultra-Low Attachment surface with covalently bonded hydrogel that minimizes cell attachment, protein absorption, enzyme activation and cellular activation
- The surface is noncytotoxic, biologically inert and nondegradable
- Round bottoms can handle 330 µL total volume
- The recommended working volumes are of 75 to 200 µL
- The non-reversible lids with condensation rings to reduce contamination

Cat. No.	Pack Qty
10023683	5

Corning™ Matrigel™ GFR Membrane Matrix



Corning Matrigel Matrix is a solubilized basement membrane preparation extracted from the Engelbreth-Holm-Swarm (EHS) mouse sarcoma, a tumor rich in extracellular matrix (ECM) proteins, including Laminin (a major component), Collagen IV, heparan sulfate proteoglycans, entactin/nidogen, and a number of growth factors.

Application:

- Cell Growth and Differentiation
- Metabolism/Toxicology Studies
- Invasion Assays
- In vitro and in vivo Angiogenesis Assays
- In vivo Angiogenesis Studies and Augmentation of Tumors in Immunosuppressed Mice

Cat. No.	Pack Qty
11543620	5mL

Corning™ Cell Recovery Solution



Corning Cell Recovery Solution enables the recovery of cells cultured on Corning Matrigel™ Basement Membrane Matrix for subsequent biochemical analyses.

Corning extracellular matrices (ECMs) enable researchers to mimic in vivo environments for 2D and 3D cell culture applications.

Cat. No.	Pack Qty
11543560	100mL

Corning™ Collagen I, Rat



Corning Collagen I from Rat Tail Tendon, is used either as a thin layer on tissue-culture surfaces to enhance cell attachment and proliferation, or as a gel to promote expression of cell-specific morphology and function.

This is effective as a gel or thin coating at a recommended concentration of 5-10µg/cm² of growth surface depending on cell type.

Cat. No.	Pack Qty
11563550	100mg

Corning™ Matribot™ Bioprinter

Welcome to the World
of 3D Cell Culture and
Bioprinting



Bioprinting fabricates a 3D tissue-like construct, layer-by-layer, using cells, spheroids or organoids suspended in a bioink. Bioprinting makes it possible to reproduce structural features seen in vivo and explore the cell-to-cell relationships that affect tissue functionality.

The new Corning™ Matribot™ Bioprinter is a breakthrough benchtop device that enables you to dispense and print with temperature sensitive hydrogels such as Corning™ Matrigel™ matrix and collagen without cold blocks, ice buckets or a cold room, as well as hydrogels that require ambient temperature. Unlike other bioprinters, the Matribot Bioprinter uses a syringe-based extrusion platform with a temperature-controlled printhead, insulated nozzles, printbed that can be heated and a UV LED system all staged in a small footprint.

Features and Benefits

- Convenient, steady temperature control – Dispenses a variety of materials without the need for a compressor
- Lab-standard equipment – No need for special cartridges or custom tubing Inks for bioprinting are also available in syringe format with standard luer locks for convenient cell mixing
- Cooling syringe printhead – can chill material, perfect for when using temperature-sensitive ECM materials such as Corning Matrigel matrix
- Heated printbed and uv curing system – Pre-heat the printing surface or polymerize post-print which is ideal for maintaining print structure for low viscosity materials such as Matrigel matrix or collagen
- Compact footprint and easy to clean – allows the Matribot bioprinter to easily fit into a standard lab hood or biosafety cabinet (BSC)
- Calibration – Offers both automatic calibration using a surface probe or contact-free manual calibration
- System flexibility – The software accepts STL, OBJ or AMF files and supports both Windows™ (XP 32 bit/7+) or macOS X (106 64bit/107+) operating systems
- Explore the world of 3D printing with easy-to-use functionality – The user-friendly Corning DNA Studio software enables you to adjust several parameters in order to optimize dispensed volumes and printed structures for your

[Learn More](#)

Corning™ Matribot™ Bioprinter with Starter Package

The Matribot™ Bioprinter features a temperature-controlled printhead and insulated nozzles, allowing the user to dispense and print with temperature-sensitive hydrogels without cold blocks, ice buckets, or cold room. Package includes supplies to get started.



- Benchtop device that dispenses and prints temperature-sensitive hydrogels such as Corning Matrigel matrix
- Uses a syringe-based extrusion platform
- Printbed capable of heating
- LED UV system for curing

Cat. No.	Pack Qty
17750789	1

Agilent BioTek MultiFlo FX Multi-Mode Dispenser

MultiFlo FX is an automated multi-mode reagent dispenser for 6- to 1536-well microplates. The system incorporates several unique technologies in its modular design, such as the parallel dispense, random access dispense (RAD) and patented automated media exchange (AMX) modules.

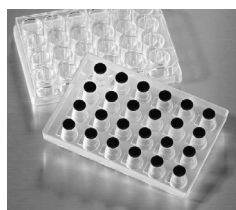


- Environmental benefits include:
 - Renewable energy

Cat. No.	Includes	Pack Qty
17227829	RAD single channel dispenser, 2 module arms, 2 peristaltic dispense pumps, 1 RAD manifold and tubing	1
17217829	2 module arms, 1 peristaltic dispense pump and 1 peri-pump cassette with plastic tips	1
17207829	1 module arm, 1 peristaltic dispense pump and 1 peri-pump cassette with plastic tips	1

Corning™ Falcon™ 24-Multiwell FluoroBlok™ Cell Culture Insert System

Collect data without plate washing, cell scraping, and counting; chart cell migration or bioavailability in real time without dismantling or destroying the insert



- Save time and labor using automated fluorescence detection
- Eliminate cell insert manipulation—get rapid data collection without the need for plate washing or manual cell scraping and counting. Chart migration of cells and molecules in realtime without dismantling or destroying the insert
- Increase sample throughput—automate many commonly used membrane-based cell assays and increase the efficiency, productivity and throughput of these assays in the drug discovery process
- Handle 24 inserts simultaneously—all 24 wells are part of a single unit that is compatible with Falcon 24-well Plates and Feeder Tray

Cat. No.	Pore Size	Pack Qty
10022541	3µm	5
10524221	8µm	1
10216921	8µm	5

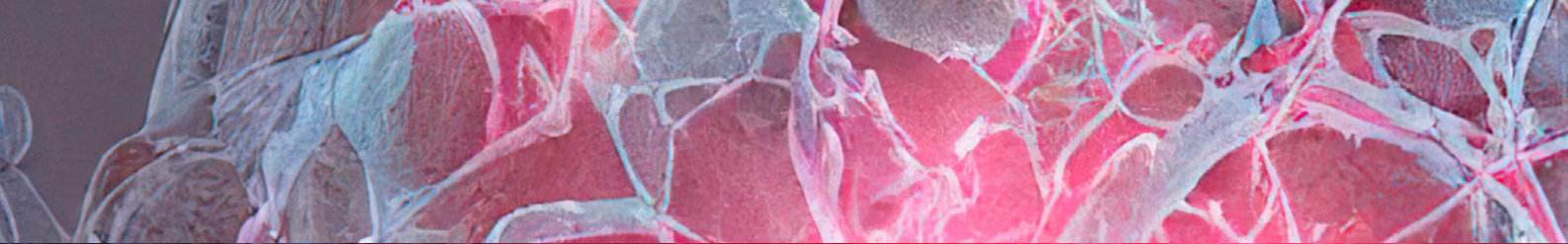
Invitrogen™ NucBlue™ Live ReadyProbes™ Reagent (Hoechst 33342)

Hoechst stain formulated in room temperature-stable solution that is provided in a dropper bottle.



- Ready-to-use liquid formulation of high-purity Hoechst 33342
- Typically Hoechst 33342 is supplied as a solid or a highly concentrated solution that requires weighing out and diluting several thousand-fold before use, and recommended storage is generally in freezer or refrigerator
- This version is ready to use and can be stored next to a microscope or workstation

Cat. No.	Pack Qty
12303553	1



Invitrogen™ NucBlue™ Fixed Cell ReadyProbes™ Reagent (DAPI)

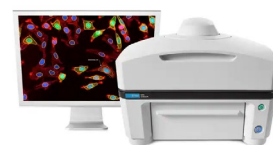


High-purity form of DAPI stain in room temperature-stable solution that is provided in a dropper bottle. DAPI is a commonly used nuclear counterstain for fixed cells that emits blue fluorescence when bound to DNA.

- In fluorescence microscopy, DAPI is excited with UV light and detected through a blue/cyan filter
- DAPI is typically supplied as a solid that requires weighing out and diluting several thousand-fold before use, and recommended storage is generally in a freezer or refrigerator
- This version is ready to use and can be stored next to a microscope or workstation

Cat. No.	Pack Qty
12333553	1

Agilent BioTek Lionheart FX Automated Microscope



The Lionheart FX automated microscope is a compact system for a broad range of imaging workflows. It offers up to 60x air; 60x and 100x oil immersion magnification, with fluorescence, brightfield, color brightfield, and phase contrast channels for maximum application reach. For research use only. Not for use in diagnostic procedures.

Cat. No.	Pack Qty
17719814	1

Invitrogen™ LIVE/ DEAD™ Viability/ Cytotoxicity Kit, for Mammalian Cells



Useful with a variety of fluorescence-detection methodologies.

The LIVE/DEAD Viability/Cytotoxicity Kit is a quick and easy two-color assay to determine viability of cells in a population based on plasma membrane integrity and esterase activity. The kit can be used in flow cytometry, fluorescence microscopy, and with fluorescence microplate readers.

- Faster, safer, more sensitive
- Less expensive

Cat. No.	Pack Qty
10237012	1

Agilent BioTek Lionheart LX Automated Microscope



The Lionheart FX automated microscope is a compact system for a broad range of imaging workflows. For Research Use Only. Not for use in diagnostic procedures.

The Lionheart LX automated microscope is designed for affordability, offering an alternative to expensive, custom-built automated microscopes that are complex to learn and use. The compact, ocular free hardware design is more comfortable to use and reduces ergonomic distress in operators.

Cat. No.	Pack Qty
17729814	1



Invitrogen™ EVOS™ M5000 Imaging System

The Invitrogen™ EVOS™ M5000 Cell Imaging System brings simple, automated microscopy within reach. All-in-one design includes high resolution fluorescence imaging, unique color illumination, a full suite of fluorescent filters, and intuitive software.



- Easy installation—no maintenance, assembly, alignment, or calibration
- User-defined four-color fluorescence, transmitted light, and color applications
- Autofocus, Z-stack capability, time-lapse imaging, and single-click multi-channel capture
- On-board software for acquisition, analysis, and automated cell counting

Cat. No.	Pack Qty
15945171	1

Invitrogen™ EVOS™ M7000 Imaging System

High-performance, fully automated, inverted, multi-channel fluorescence and transmitted light imaging system. Developed to meet today's expectations for image quality, user interface interactions, data generation speed and flexibility, and end-user value with just a few clicks.



- Outstanding image quality and versatility with a 5-position objective turret, 4-color LED fluorescence and transmitted light channels, and 3.2 MP CMOS color and B/W cameras
- Exceptional usability with fully automated X/Y scanning stage, autofocus, and acquisition routines
- High-speed image acquisition coupled with multi-position well scanning, and Z-stack and tile-stitch options lend power and flexibility to your data generation

Cat. No.	Pack Qty
15918206	1

Agilent BioTek Cytation 5 Multi-Mode Only Reader



The Cytation 5 combines automated microscopy and conventional microplate detection in a configurable, upgradable platform. For Research Use Only. Not for use in diagnostic procedures.

The multi-mode detection modules include filter- and monochromator-based fluorescence detection, luminescence, and UV-Vis absorbance detection. Gen5 software provides complete control over all imaging and data capture, plus powerful image and data analysis.

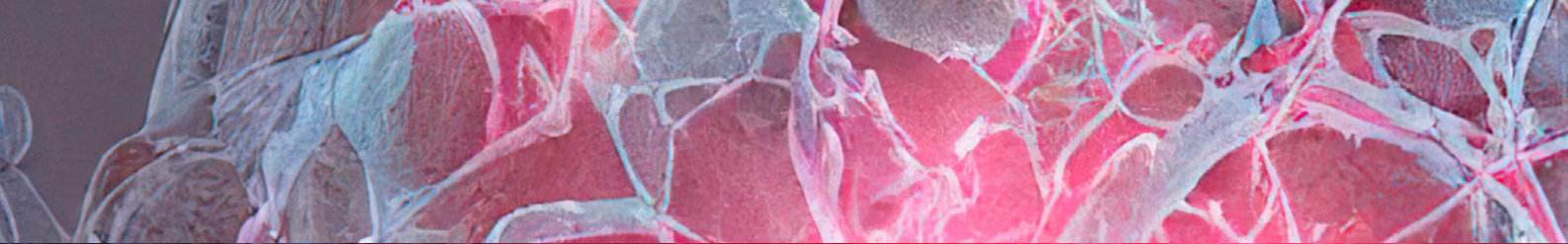
Cat. No.	Includes	Pack Qty
17207939	Filter-based fluorescence intensity/fluorescence polarization/time resolved fluorescence/luminescence/alpha detection	1
17227949	Filter-based fluorescence intensity/fluorescence polarization/time resolved fluorescence/luminescence; Monochromator-based UV-Vis absorbance/fluorescence intensity/time resolved fluorescence (secondary)/luminescence	1
17207949	Monochromator-based UV-Vis absorbance/fluorescence intensity/time resolved fluorescence (secondary)/luminescence	1
17287929	Filter-based fluorescence intensity/fluorescence polarization/time resolved fluorescence/luminescence	1
17247949	Filter-based fluorescence intensity/fluorescence polarization/time resolved fluorescence/luminescence/alpha detection; Monochromator-based UV-Vis absorbance/fluorescence intensity/time resolved fluorescence (secondary)/luminescence	1

Greener Choice Program

Sustainable products to help you reduce your environmental footprint



[Find Out More](#)



Agilent BioTek Cytation 5 Cell Imaging Multi-Mode Reader



Cytation 5 combines automated microscopy and conventional microplate detection in a configurable, upgradable platform. For Research Use Only. Not for use in diagnostic procedures.

The microscopy module offers up to 60x magnification in fluorescence, brightfield, high contrast brightfield, color brightfield, and phase contrast to address many applications and workflows

Cat. No.	Includes	Pack Qty
17267939	Fluorescence/brightfield/color brightfield imaging; Filter-based fluorescence intensity/fluorescence polarization/time resolved fluorescence/luminescence	1
17227939	Fluorescence/brightfield/color brightfield imaging; Filter-based fluorescence intensity/fluorescence polarization/time resolved fluorescence/luminescence/alpha detection	1
17287939	Wide FOV camera; Fluorescence/brightfield/color brightfield imaging; Filter-based fluorescence intensity/fluorescence polarization/time resolved fluorescence/luminescence	1
17247939	Wide FOV camera; Fluorescence/brightfield/color brightfield imaging; Filter-based fluorescence intensity/fluorescence polarization/time resolved fluorescence/luminescence/alpha detection	1
17207969	Wide FOV camera; Fluorescence/brightfield/color brightfield imaging; Monochromator-based UV-Vis absorbance/fluorescence intensity/time resolved fluorescence (secondary)/luminescence	1
17227959	Wide FOV camera; Fluorescence/brightfield/color brightfield imaging; Filter-based fluorescence intensity/fluorescence polarization/time resolved fluorescence/luminescence; Monochromator-based UV-Vis absorbance/fluorescence intensity/time resolved fluorescence (secondary)/luminescence	1
17267959	Wide FOV camera; Fluorescence/brightfield/color brightfield/phase contrast imaging; Monochromator-based UV-Vis absorbance/fluorescence intensity/time resolved fluorescence (secondary)/luminescence	1
17287949	Wide FOV camera; Fluorescence/brightfield/color brightfield imaging; Filter-based fluorescence intensity/fluorescence polarization/time resolved fluorescence/luminescence; Monochromator-based UV-Vis absorbance/fluorescence intensity/time resolved fluorescence (secondary)/luminescence/alpha detection	1
17287959	Fluorescence/brightfield/color brightfield imaging; Monochromator-based UV-Vis absorbance;/ fluorescence intensity/time resolved fluorescence (secondary)/luminescence	1

Cat. No.	Includes	Pack Qty
17207959	Fluorescence/brightfield/color brightfield imaging; Filter-based fluorescence intensity/fluorescence polarization/time resolved fluorescence/luminescence; Monochromator-based UV-Vis absorbance/fluorescence intensity/time resolved fluorescence (secondary)/luminescence	1
17247959	Wide FOV camera; Fluorescence/brightfield/color brightfield imaging; Filter-based fluorescence intensity/fluorescence polarization/time resolved fluorescence/luminescence/alpha detection	1
17267949	Wide FOV camera; Fluorescence/brightfield/color brightfield imaging; Filter-based fluorescence intensity/fluorescence polarization/time resolved fluorescence/luminescence; Monochromator-based UV-Vis absorbance/fluorescence intensity/time resolved fluorescence (secondary)/luminescence/alpha detection	1

Agilent BioTek Cytation 5 Cell Imaging Only Reader



The Cytation 5 combines automated microscopy and conventional microplate detection in a configurable, upgradable platform. The microscopy module offers up to 60x magnification in fluorescence, brightfield, high contrast brightfield, color brightfield, and phase contrast to address many applications and workflows. For Research Use Only. Not for use in diagnostic procedures.

Cat. No.	Includes	Pack Qty
17267969	Fluorescence/brightfield/color brightfield imaging	1
17227969	Fluorescence/brightfield/color brightfield/phase contrast imaging	1
17287969	Wide FOV camera; Fluorescence/brightfield/color brightfield imaging	1
17247969	Wide FOV camera; Fluorescence/brightfield/color brightfield/phase contrast imaging	1



Agilent BioTek Cytation 7 Cell Imaging Multi-Mode Reader



The BioTek Cytation 7 cell imaging multi-mode reader combines automated digital upright and inverted widefield microscopy with conventional multi-mode microplate reading. The Cytation 7 includes continually variable bandpass monochromators for versatility and performance for general multi-mode plate reader applications. For Research Use Only. Not for use in diagnostic procedures.

Cat. No.	Includes	Pack Qty
17207979	Upright microscope only with 1x, 2x, 4x and 8x lenses; Upgradable to add inverted microscope and/or multi-mode detection module	1
17227979	Upright microscope and multi-mode microplate reader; 1x, 2x, 4x and 8x magnification lenses; Monochromator-based fluorescence intensity, luminescence and absorbance microplate detection	1
17247979	Upright microscope with 1x to 8x magnification; Inverted fluorescence microscope with wide field of view (WFOV) camera (up to 60x magnification); Monochromator-based fluorescence intensity/luminescence and absorbance microplate detection	1
17267979	Upright microscope with 1x to 8x magnification; Inverted fluorescence microscope with wide field of view (WFOV) camera with up to 60x magnification	1

Agilent BioTek Cytation C10 Confocal Imaging Reader



The BioTek Cytation C10 confocal imaging reader combines automated confocal and widefield microscopy with conventional multi-mode microplate reading. The patented design gives exquisite resolution and optical sectioning capabilities for many sample types. Components include a Hamamatsu scientific CMOS (sCMOS) camera, Olympus objectives, and laser-based illumination, that deliver high-quality images. For Research Use Only. Not for use in diagnostic procedures.

Cat. No.	Includes	Pack Qty
17207919	Confocal 40 & 60µm spinning disks; Hamamatsu sCMOS camera; Multi-mode reading; Phase contrast	1
17227919	Sony CMOS camera; Multi-mode reading; Phase contrast	1
17247919	Confocal 60µm spinning disk; Sony CMOS camera; Multi-mode reading; Phase contrast	1
17267919	Sony CMOS camera; Phase contrast	1
17287919	Sony CMOS camera; Phase contrast	1
17207929	Confocal 60µm spinning disk; Sony CMOS camera; Phase contrast	1

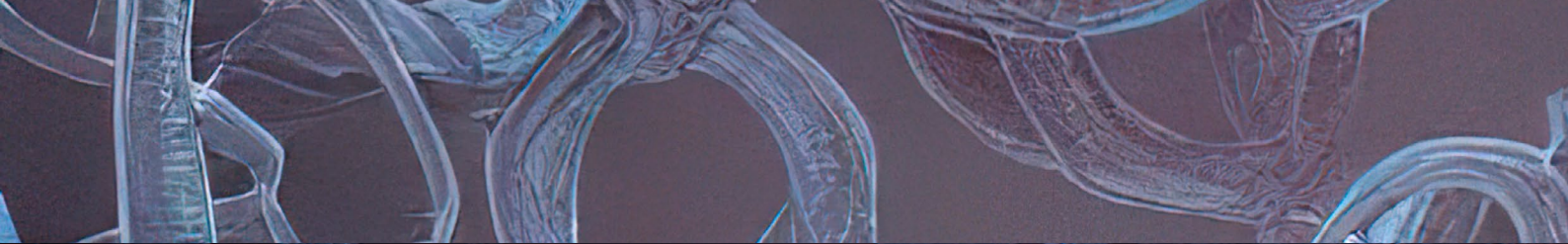
 fisher scientific

Safety Starts Here

Keep your people, processes, and facilities safe.

[Learn More](#)





Distributed by Fisher Scientific. Contact us today:

Austria: fishersci.at **Belgium:** fishersci.be **Denmark:** fishersci.dk
Germany: fishersci.de **Ireland:** fishersci.ie **Italy:** fishersci.it
Finland: fishersci.fi **France:** fishersci.fr **Netherlands:** fishersci.nl
Norway: fishersci.no **Portugal:** fishersci.pt **Spain:** fishersci.es
Sweden: fishersci.se **Switzerland:** fishersci.ch **UK:** fishersci.co.uk

© 2022 Thermo Fisher Scientific Inc. All rights reserved.
Trademarks used are owned as indicated at fishersci.com/trademarks.

 **fisher scientific**
part of **Thermo Fisher Scientific**