

# Resolve to recycle the right way

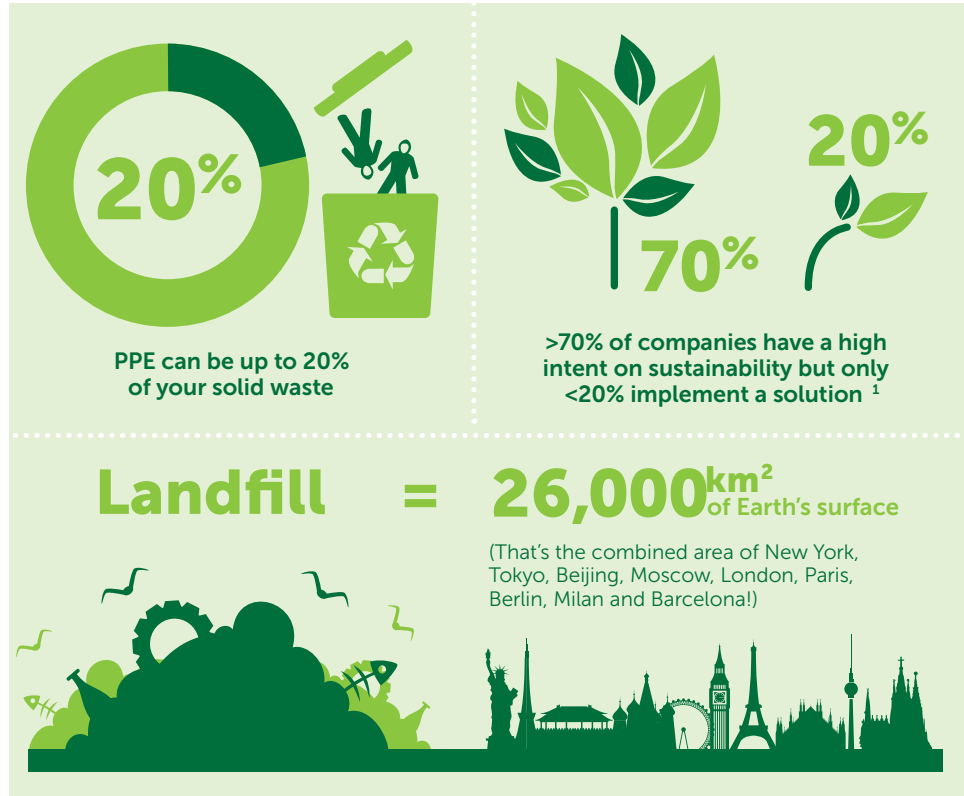
Introducing the **RightCycle**® programme



*Together we create  
exceptional workplaces*



## Did you know?



## Introducing **RightCycle**<sup>®</sup> from Kimberly-Clark Professional<sup>™</sup>

Your company needs an effective solution to mitigate waste and help you reach your Corporate Social Responsibility (CSR) and Sustainability goals.

But what's the best solution for your business? The answer is simple. **RightCycle**<sup>®</sup> by Kimberly-Clark Professional<sup>™</sup>

We've resolved the recycling process – beyond downcycling, upcycling and other ideas – with the right way to recycle.

RightCycle\* makes it easy to recycle previously hard-to-recycle products like garments and nitrile gloves. Now the garments and gloves used in your facility can be turned into a variety of useful, eco-friendly products.

**RightCycle\* is good for your business and good for the planet.**

## The **RightCycle**<sup>®</sup> Way explained *Simple, efficient, responsible*



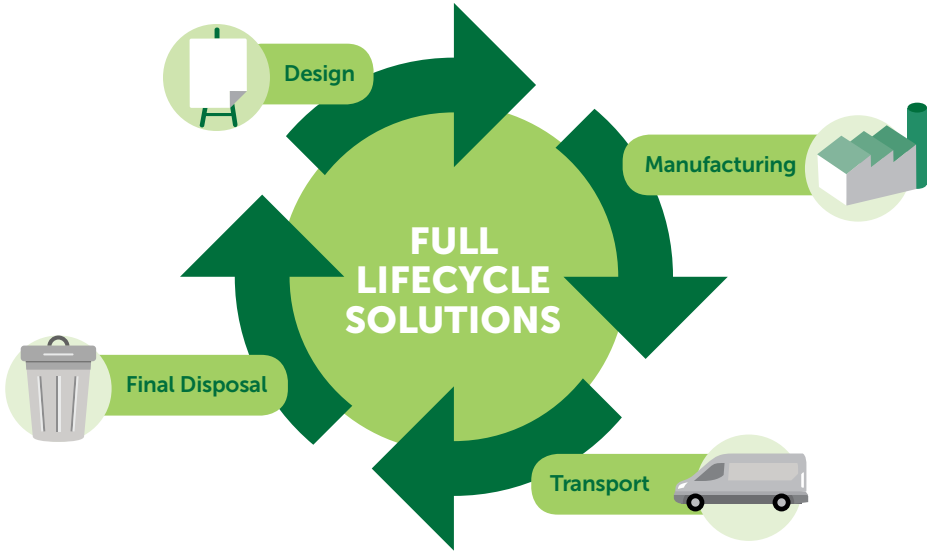
### How to sign up for the **RightCycle**<sup>®</sup> programme:

1. Send an email to Kimberly-Clark Professional<sup>™</sup> [kimtech.support@kcc.com](mailto:kimtech.support@kcc.com) with an expression of interest in the programme
2. Our Kimberly-Clark Professional<sup>™</sup> contact person will explain the programme details, provide you with marketing tools and a bulk bag to start the collection
3. Only collect non-hazardous Kimtech<sup>™</sup> garments and nitrile gloves
4. Contact our recycling partner once pallet is full and arrange and pay for pick-up and shipment to local warehouse

<sup>1</sup> Roberts Environmental Report, 2009  
<sup>2</sup> <http://answers.yahoo.com/question/index?qid=20090311193820AALWU7s>

<sup>1</sup> Only KIMTECH<sup>™</sup> Branded gloves and garments can be recycled

# Committed to Sustainability



## Kimberly-Clark Professional™'S commitment to sustainability throughout the entire product lifecycle

### Design

STERLING\* Glove technology has helped Kimberly-Clark Professional™ to create a glove that has equivalent chemical holdout to thicker gloves, while reducing material usage by 50%.

### Manufacturing

Kimberly-Clark Professional™ apparel manufacturing facilities are 98% landfill free. Our vision is to be 100% landfill free by 2015.

### Transport

Improved pallet fit, and more product per case has reduced the transportation carbon footprint of our products.

### Final Disposal

Our RightCycle\* Program offers an innovative recycling program for gloves and garments. Instead of going to landfills, these materials will be recycled to create new products.

For more information email Kimberly-Clark Professional™ at [kimtech.support@kcc.com](mailto:kimtech.support@kcc.com) or visit us: [www.kimtech.eu](http://www.kimtech.eu)



*Together we create  
exceptional workplaces*

